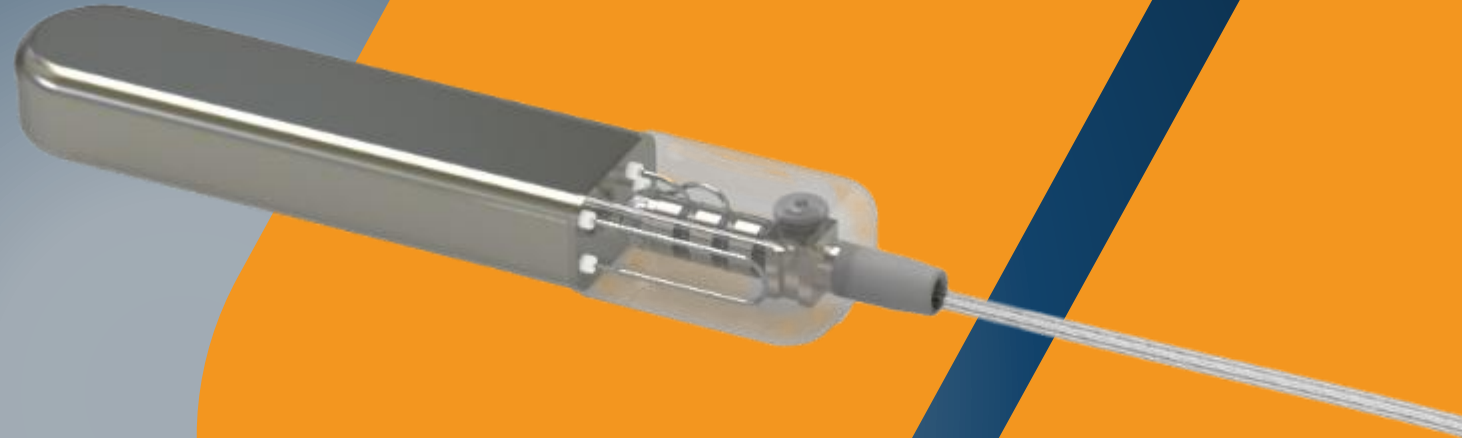


Glucotrack 

# Advancing Diabetes Management

Introducing  
Continuous Blood Glucose Monitoring

April 2026



# IMPORTANT DISCLAIMERS



This presentation contains forward-looking statements within the meaning of the Private Securities Litigation Reform Act of 1995. Statements contained in this presentation that are not statements of historical fact may be deemed to be forward-looking statements. Without limiting the generality of the foregoing, words such as “believe”, “expect”, “plan” and “will” are intended to identify forward-looking statements. Such forward-looking statements are based on the beliefs of management, as well as assumptions made by, and information currently available to, management. These statements relate only to events as of the date on which the statements are made, and Glucotrack undertakes no obligation to publicly update any forward-looking statements, whether as a result of new information, future events or otherwise, except as required by law. All of the forward-looking statements made in this presentation are qualified by these cautionary statements, and there can be no assurance that the actual results anticipated by Glucotrack will be realized or, even if substantially realized, that they will have the expected consequences to or effects on us or our business or operations. Readers are cautioned that certain important factors may affect Glucotrack’s actual results and could cause such results to differ materially from any forward-looking statements that may be made in this presentation. Factors that may affect Glucotrack’s results include, but are not limited to, the ability of Glucotrack to raise additional capital to finance its operations (whether through public or private equity offerings, debt financings, strategic collaborations or otherwise); risks relating to the receipt (and timing) of regulatory approvals (including U.S. Food and Drug Administration approval); risks relating to enrollment of patients in, and the conduct of, clinical trials; risks relating to Glucotrack’s future distribution agreements; risks relating to its ability to hire and retain qualified personnel, including sales and distribution personnel; and the additional risk factors described in Glucotrack’s filings with the U.S. Securities and Exchange Commission (the “SEC”), including its Annual Report on Form 10-K for the year ended December 31, 2025 as filed with the SEC on March 30, 2026.

# REDEFINING GLUCOSE MONITORING



## CBGM

Continuous **Blood** Glucose Monitoring

-  Implantable
-  No Wearables
-  Long-term Monitoring
-  Direct Blood Sensing

Glucotrack 

# CBGM: ADVANCED MONITORING, EXPANDING MARKET



## SOLUTION



### Direct Blood Sensing

- Fully Implantable
- 3-Year Longevity
- No Wearables

## MARKET

**\$13.4B<sup>1</sup>**

Global CGM Market

**~50%**

of Patients Underserved

## VALIDATION



### First-in-human safety demonstrated

- Feasibility study complete (OUS)
- IDE process initiated
- ISO 13485 certified

Reference: 1. Close Concerns 4Q24 Industry Roundup – April 13, 2026.

# AN EXPERIENCED TEAM



**Paul V. Goode, PhD**

**President & CEO**

- Glucose monitoring
- Implantable cardiac devices



**Drinda Benjamin, MBA**

**VP, Marketing**

- Glucose monitoring
- Insulin delivery



**Sandie Martha, MS**

**VP, Clinical Operations**

- Glucose monitoring
- Cardiology



**Mark Tapsak, PhD**

**Chief Scientific Officer**

- Glucose monitoring
- Implantable cardiac devices



**JP Thrower, PhD**

**VP, Advanced Technologies**

- Glucose monitoring
- Patient monitoring



**Ted Williams**

**VP, Regulatory**

- Glucose monitoring
- Cardiovascular gene therapy



**Vincent Wong, MS**

**Chief Operating Officer**

- Implantable stimulators
- implantable orthopedics



# DIABETES INNOVATION CAN'T WAIT

The growing burden is placing enormous strain on healthcare resources



**2x higher risk**  
Heart disease or stroke



**~40% develop**  
Chronic kidney disease



**>25% spending**  
Linked to diabetes

**1 in 10 adults**  
40 million Americans

References: CDC/National Center for Health Statistics, <https://www.cdc.gov/diabetes/php/data-research/index.html>; Accessed on April 14, 2026. 2. 2022 ADA Economic Costs of Diabetes in the U.S.

# CGM ADOPTION IS ACCELERATING

Yet More Than Half the Market Remains Untapped




**\$13.4B** Global CGM Market (2025)

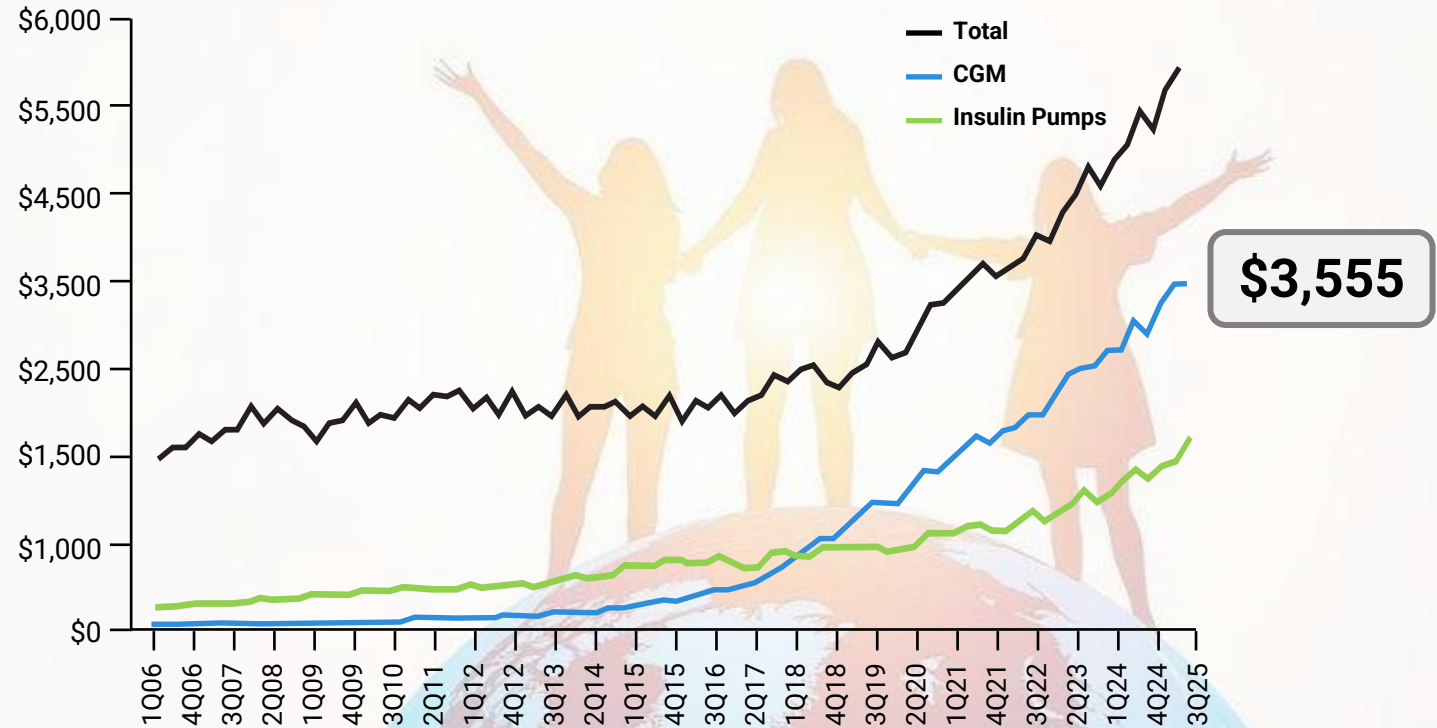
~50% of revenue generated in US

Q4 2025 revenue of **\$3.6B**

+12% year over year

Since 1999, **CGM adoption** has **increased** dramatically, becoming the **standard of care** in many settings. 

Diabetes Technology Quarterly Revenue (M)<sup>1</sup>



Despite rapid growth, ~50% of eligible patients still do not use CGM

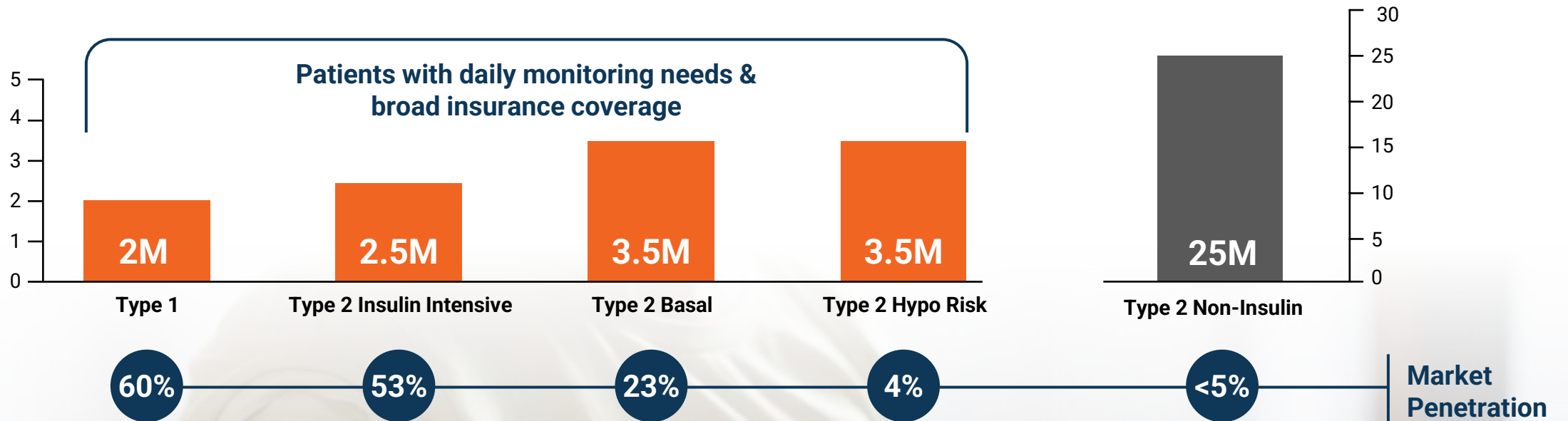
Reference: Close Concerns 4Q25 Industry Roundup – April 13, 2026.

# CGM FOCUS IS SHIFTING TO LOWER-RISK

Adoption is expanding beyond the highest-need populations



Diabetes Segments by Size & Penetration (M)<sup>1</sup>



**CGM expansion is increasing, but high-needs patients remain underserved**

Reference: 1. Third party analyst estimates.

CGM was a breakthrough, but...

# THE TECHNOLOGY STILL HAS LIMITS

While CGM improved outcomes, adoption and long-term adherence fall below expectations



## CGM Benefits

### Continuous Monitoring

24/7 wearable sensor

Glucose trends

### Actionable Insights

Shows direction and rate of glucose change

### Established Standard

Broad clinical validation

Widely reimbursed

## CGM Limitations

### Wearable Burden

Adhesive irritates skin

Sensors fall off interfering with activity

### Delayed Glucose Readings

Interstitial sensing can lag BG

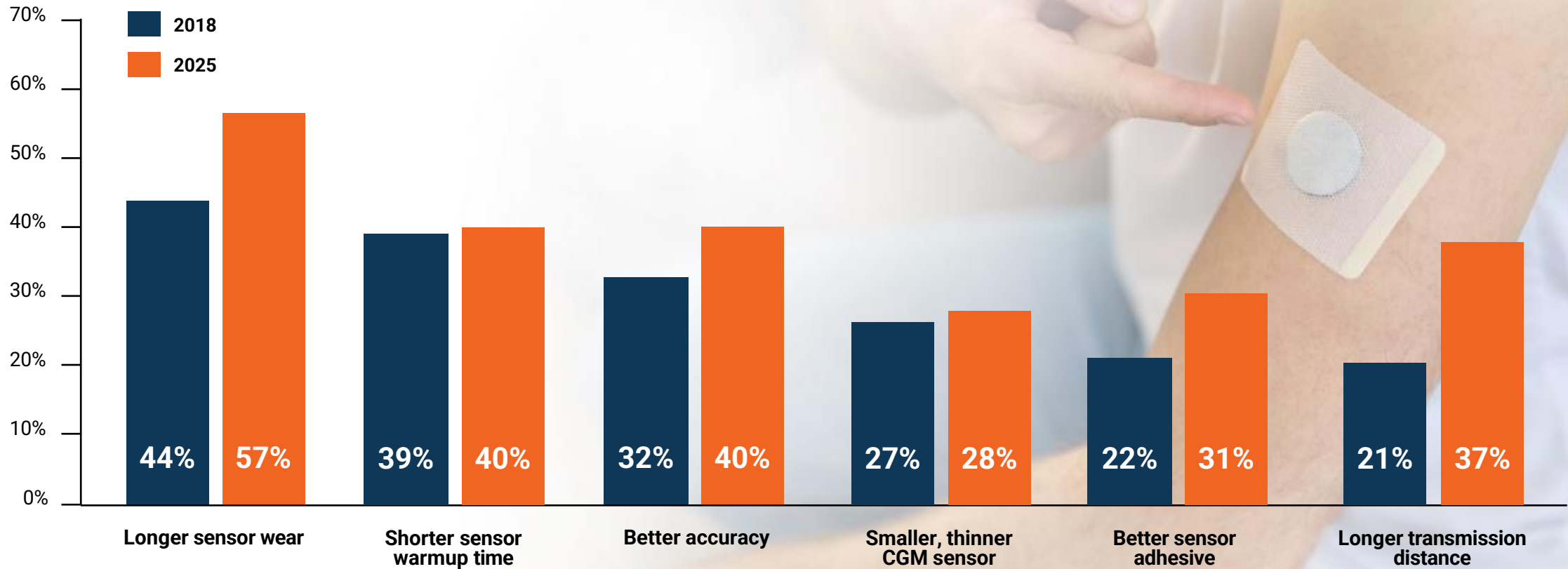
### Short Sensor Life

Frequent replacement and supply management

Prescriptions, refills, insurance re-authorizations

# WHAT PATIENTS WANT, BUT ARE STILL NOT GETTING

Unaddressed patient needs growing in importance



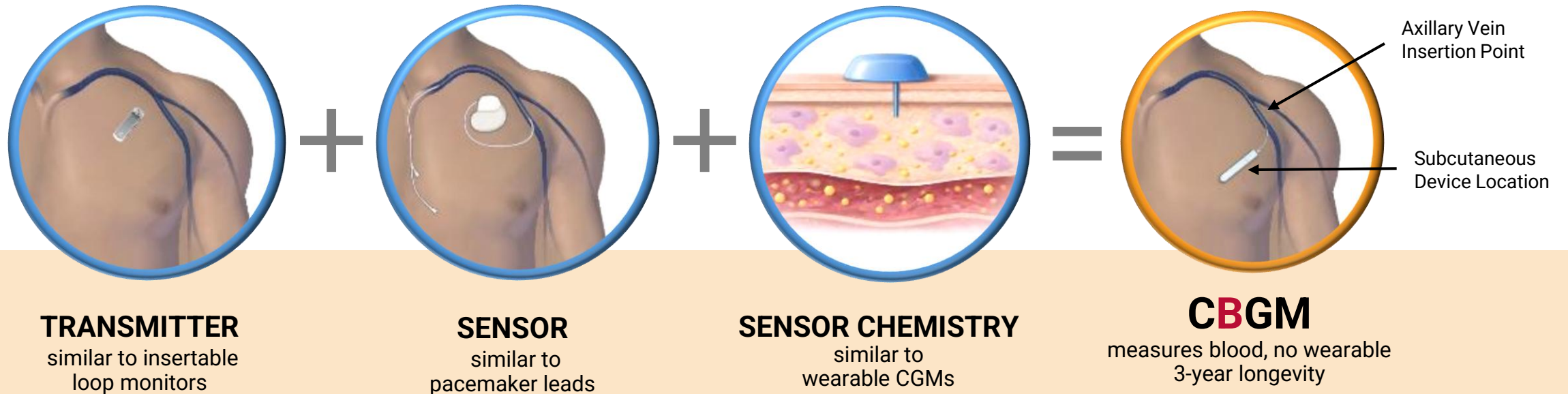
Reference: dQ&A Q1 2018 Market Research - Base CGM users (N=1,306); dQ&A Q3 2025 Market Research - Base CGM users (N=3,015).



# The Glucotrack Solution: A BREAKTHROUGH **CBGM** SYSTEM

A first-of-its-kind system that combines the best of **glucose monitoring** and **cardiac monitoring** technology in one device

Designed from **FDA-approved components** and **adopted techniques** to accelerate development and reduce regulatory risk



# CARDIOLOGY IMPLANT SPECIALISTS ALREADY SEE PATIENTS WITH DIABETES



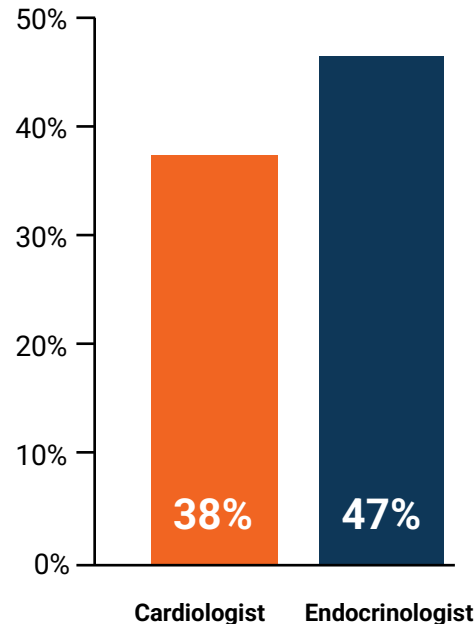
## DIABETES IS A CARDIOMETABOLIC DISEASE

Strongly associated with **Atherosclerotic Cardiovascular Disease (ASCVD), heart failure, and stroke**

Cardiologists increasingly involved in **diabetes management**

Many patients already have **established cardiology relationships**

Patients with Diabetes Seen by Specialist in Past 12 Months



## CARDIOLOGY IMPLANT SPECIALISTS

Experienced in **active implantable monitoring devices**

Routinely implant **ICMs, pacemakers, and defibrillators, ports**

Skilled in **minimally invasive procedures** and long-term device management



**Nearly 4 in 10 diabetes patients already see a cardiologist.**

Reference: Internal market research, T1D respondents (n=206; T2D respondents (n=600).

# PUTTING RISK IN PERSPECTIVE

The real threat is uncontrolled diabetes

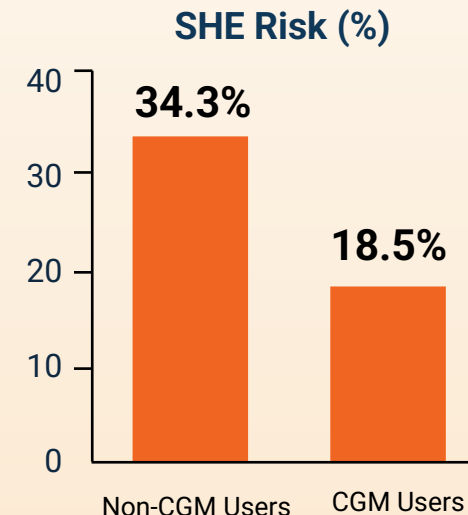
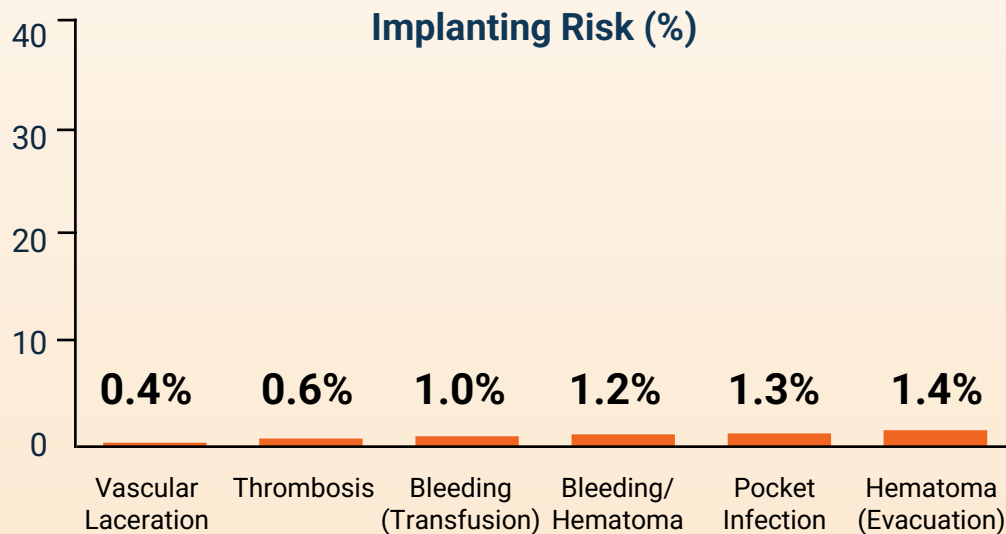
**Implant complications are very low<sup>1</sup>**

**Glucotrack's CBGM is even less complex**

- Simpler procedure
- Smaller lead
- Shorter entry

**Severe Hypoglycemic Event (SHE) risk ( $\geq 1$  in previous 12 months)<sup>2</sup>, even with wearable CGM, far exceeds implantation risk**

- Seizures
- Unconsciousness
- Even death



References: 1. Kusumoto FM, Schoenfeld MH, Wilkoff BL, et al. 2017 HRS expert consensus statement on cardiovascular implantable electronic device lead management and extraction. Heart Rhythm. 2017;14(12). 2. Sherr, Jennifer L., et al. "Severe hypoglycemia and impaired awareness of hypoglycemia persist in people with type 1 diabetes despite use of diabetes technology: results from a cross-sectional survey." Diabetes Care 47.6 (2024): 941-947.

# WHAT MAKES OUR CBGM DIFFERENT?



**Implant once. Monitor for years.**

Designed to deliver up to **3 years** of continuous monitoring with **blood-true accuracy** without no external wearables or daily upkeep.

## LONGEVITY

**One sensor.  
Three years.**

A leap forward from frequent sensor replacement.

## DESIGN

**No skin adhesive.  
No bulky wearables.**

Designed to minimize burden and integrate into everyday life.

## ACCURACY

**Blood-true sensing.  
Real-time accuracy.**

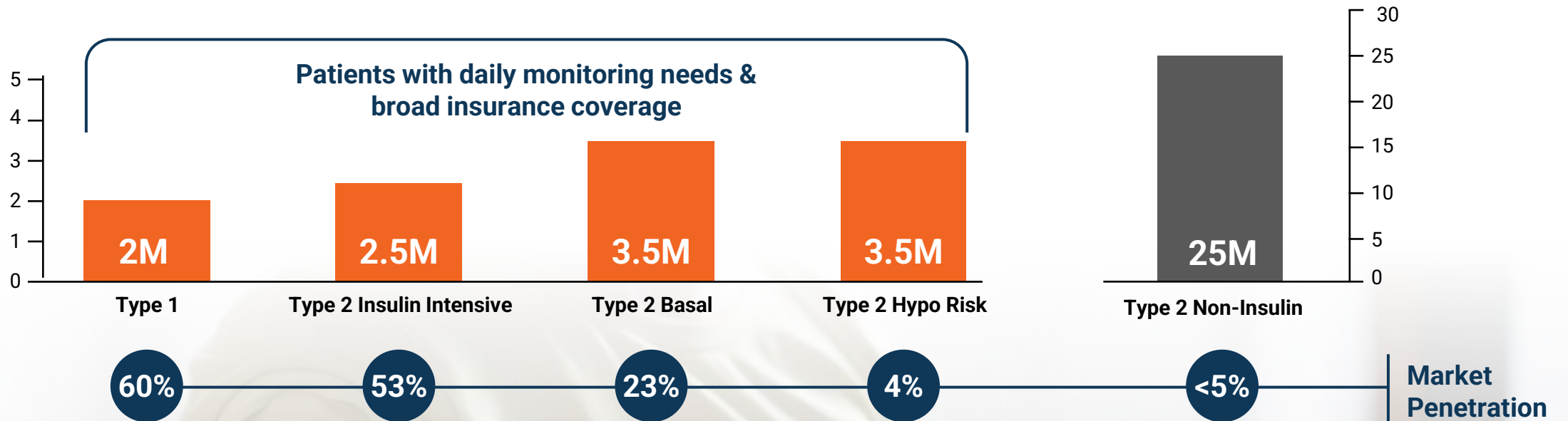
Supports confident daily decisions.

# CGM FOCUS IS SHIFTING TO LOWER-RISK

Adoption is expanding beyond the highest-need populations



Diabetes Segments by Size & Penetration (M)<sup>1</sup>



**CGM expansion is increasing, but high-needs patients remain underserved**

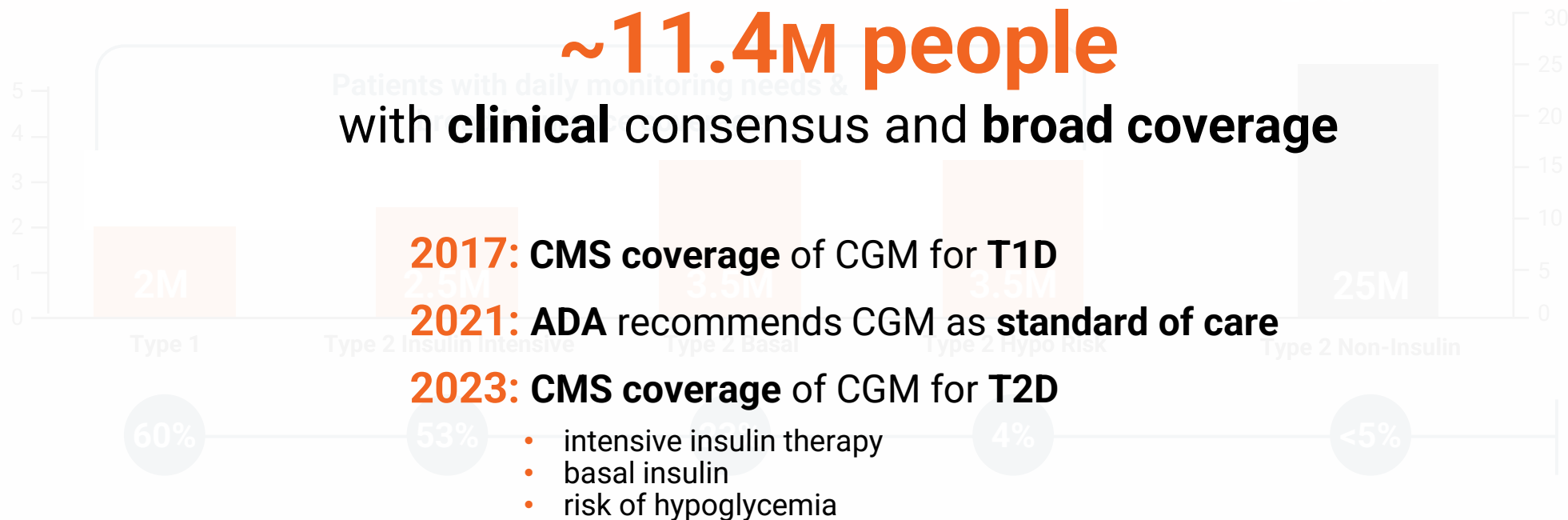
Reference: 1. Third party analyst estimates.



# CBGM TARGETED POPULATIONS

Four targeted segments rely on CGM daily

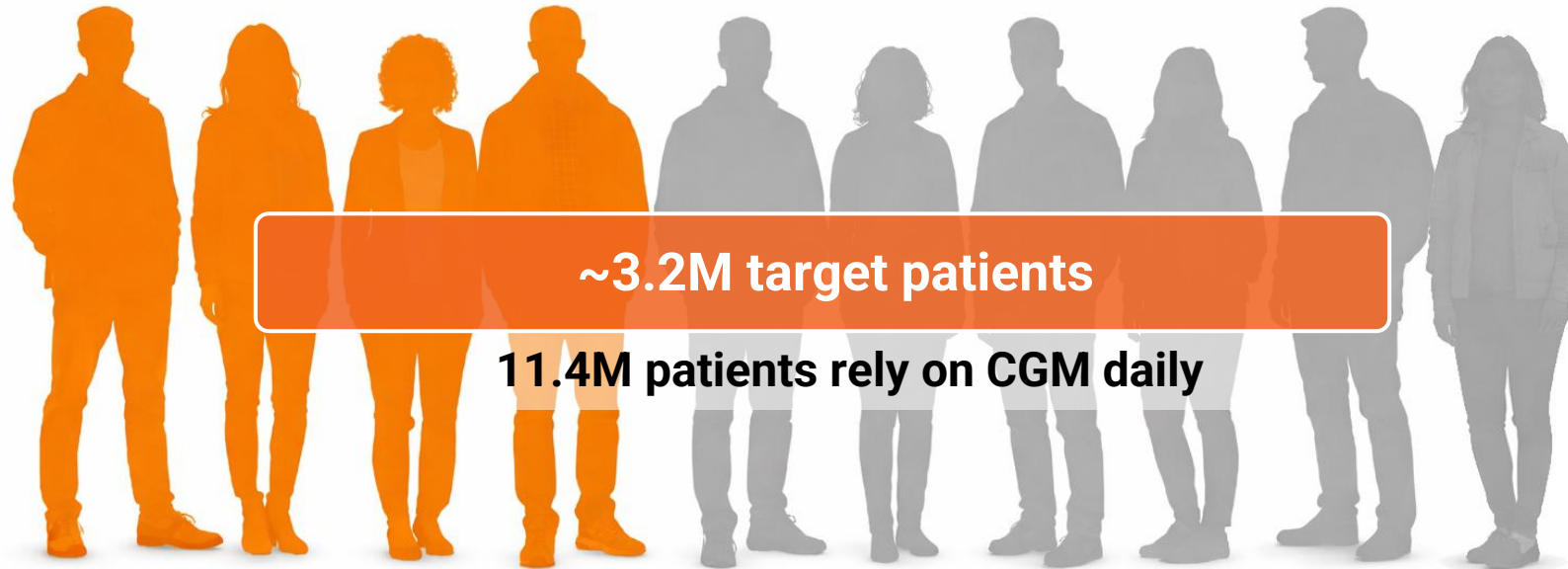
Diabetes Segments by Size (M)



CGM expansion is increasing, but high-needs patients remain underserved

# LARGE MARKET OPPORTUNITY FOR CBGM

According to research, ~1 in 4 TAM patients are willing to receive an implant



## WHY CBGM MATTERS

### Reduces CGM “tech burnout”

Patients frequently report fatigue from sensor replacement, adhesion issues, device charging, and troubleshooting.

### Increases long-term adherence

Lower daily management burden may improve sustained monitoring for patients with complex care routines.

### Improves confidence

Some CGM users report uncertainty during rapid glucose changes, leading to fingerstick confirmation or reliance on symptoms.

Reference: Data on file.

# FIRST-IN-HUMAN STUDY DEMONSTRATES FEASIBILITY

Prototype implant demonstrated reliable continuous glucose monitoring



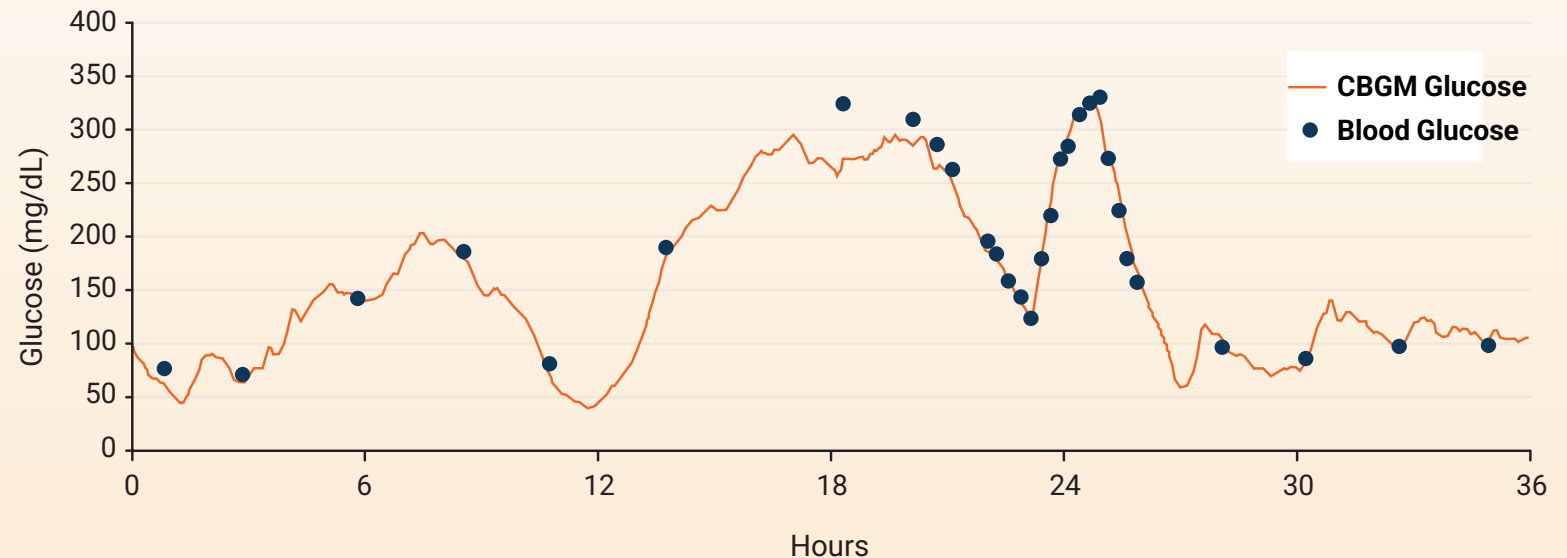
## Study Overview

- 8 participants with T1D or T2D using intensive insulin
- Sensor lead implanted with prototype external electronics
- 36-hour continuous glucose monitoring including fasting state

## Key Outcomes

- All primary and secondary endpoints met
- 99% data capture rate

36-hour glucose monitoring including FST 1; MARD=5.9%



**No serious device- or procedure-related adverse events**

Reference: Abizaid A, Campos C, Latronico AC, et al. Early Feasibility Study to Evaluate an Intravascular Continuous Blood Glucose Monitor in Adults with Diabetes Mellitus. Poster presentation at the 18th International Conference on Advanced Technologies & Treatments for Diabetes, March 19-22, 2025, Amsterdam, The Netherlands.

# EARLY DATA SHOW STRONG SENSOR ACCURACY

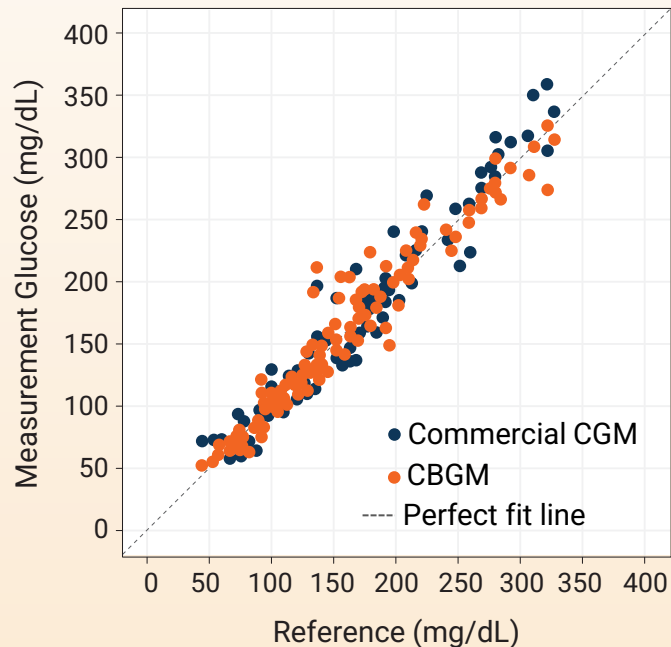
Performance vs reference blood glucose measurements



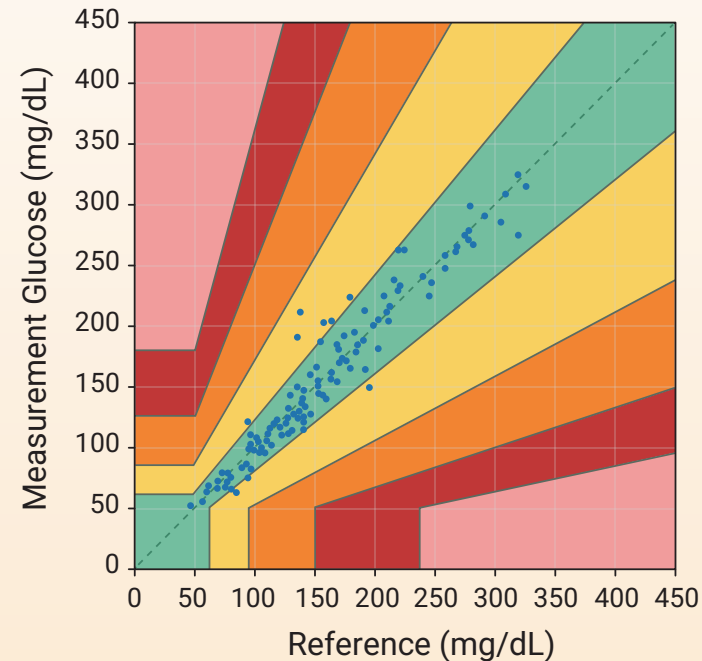
**MARD**  
**7.7%**

across 122 matched  
glucose pairs

Continuous Measurements vs Reference



DTS Error Grid CBGM incl. Calibration Points



**91.6%**  
within green

Clarke/Parkes  
error grid zones

**0%**

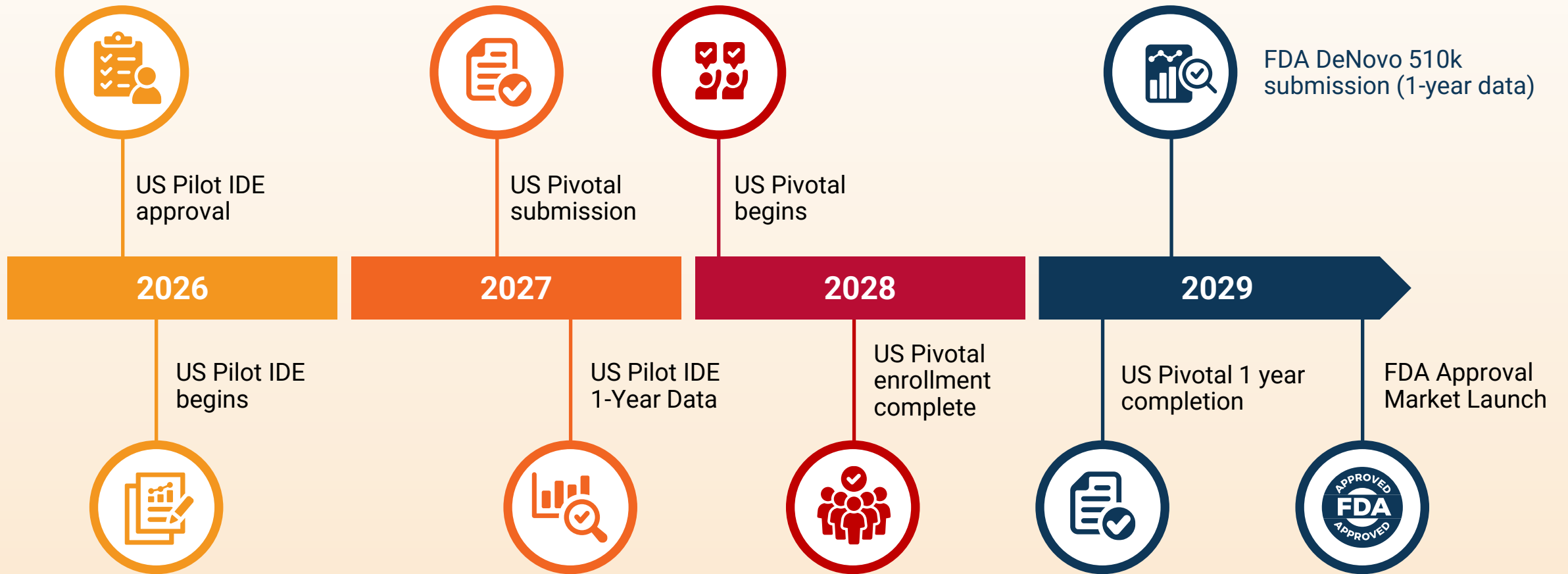
in clinically  
significant  
error zones

**No serious device- or procedure-related adverse events**

Reference: Tapsak MA, Abizaid A, Campos C, et al. Early Feasibility Study to Evaluate an Intravascular Continuous Blood Glucose Monitor in Adults with Diabetes Mellitus. Poster presentation at the 85th Scientific Sessions, American Diabetes Association, June 20-23, 2025, Chicago, IL.

# CLINICAL AND REGULATORY TIMELINE

Leveraging proven regulatory strategies – DeNovo 510k Pathway



# ENGINEERED FOR WHAT PATIENTS WANT

(and Wearable CGMs Can't Deliver)



- ✓ **Unsurpassed longevity**  
Placed once every 3 years  
20-minute outpatient procedure
- ✓ **Wearable-free comfort**  
Fully implantable design  
No on-body devices
- ✓ **Real-time blood glucose readings**  
Uses blood-true sensing  
Greater accuracy and trust
- ✓ **Simplified access and management**  
Eliminates routine reordering  
No ongoing pre-authorizations



# POISED FOR IMPACT. POSITIONED FOR GROWTH.

Glucotrack is pioneering a fully implantable, long-term CBGM designed to overcome the limitations of wearable CGMs



## ADOPTION

Unlock **adoption** among the **>50% of patients** not using CGM today

## MOMENTUM

Capitalize on strong diabetes market growth driven by **escalating** disease cost and burden

## CONVERSION

Convert CGM users and non-users **seeking** a **better monitoring** experience

## SCALE

Expand through **regulatory alignment**, **reimbursement access**, and **commercialization**

# Thank You